



## WHAT ENERGY INDEPENDENCE LOOKS LIKE



With over 35 years of experience in solar, Silfab continues to be the leader in North America for design, engineering and manufacturing of premium quality solar panels. With two fully automated ISO-9001-2015 quality certified production lines in Toronto, Canada and Bellingham, Washington, Silfab delivers superior reliability, performance and aesthetics.



# AESTHETICALLY PLEASING + MAXIMUM POWER

Add the beauty of all black solar to your home. Seamless in appearance, Silfab's sleek all black modules – cells, frame, backsheet – provide a solar array as good looking as the house under it.



## HIGH POWER DENSITY = MORE POWER + SMALLER FOOTPRINT

Silfab produces high efficiency solar panels using the latest in cell technology.

With a smaller footprint and an optimized circuit design, you can harvest more energy from the sun and yield better ROI through clean renewable energy.



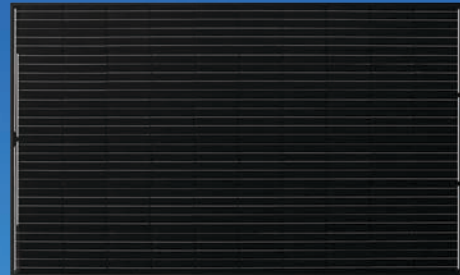
## LOCAL SERVICE AND SUPPORT

Our 500+ North American team is ready to provide customer service and support that is efficient and local.



## HIGH-PERFORMANCE WARRANTY COVERAGE

Solar is a big investment and you want to have peace of mind that your solar panels will deliver premium performance throughout their lifetime. Silfab offers a comprehensive 25-year product and 30-year performance warranty that will ensure your investment is covered.\*



## QUALITY MATTERS

Ensuring that solar modules perform for 30 years requires high-quality components, superior design and exceptional quality control throughout the entire manufacturing process.

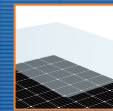
### ENHANCED DURABILITY

- 4000Pa wind and 5400Pa snow load ratings for enhanced durability in extreme conditions



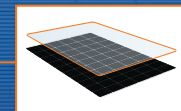
### GLASS STRUCTURE

- High transparency, tempered solar glass for maximized durability and sunlight transmittance



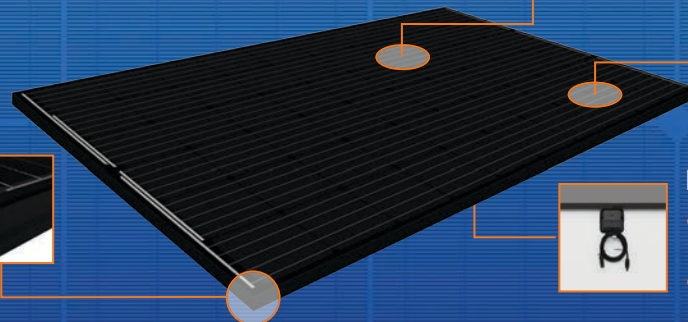
### LONG LASTING ANTI-REFLECTIVE GLASS COATING

- Enhanced light capture at all incident angles (sunrise, sunset, winter)



### FRAME FEATURES

- High quality black anodization for seamless roof integration
- Engineered frame profile design for enhanced strength and rigidity
- Tested and certified for Salt Mist exposure and Ammonia Corrosion Resistance



### BACKSHEET

- High-quality backsheet for long-lasting protection against nature's elements
- White exterior reduces cell temperature, maximizing solar panels performance and reliability.



Silfab Solar Inc.  
240 Courtney Park Drive East | Mississauga ON L5T 2Y3 Canada  
Tel +1 905-255-2501 | Fax +1 905-696-0267  
www.silfabsolar.com | info@silfabsolar.com

Silfab Solar Inc.  
800 Cornwall Ave | Bellingham WA 98225 USA  
Tel +1 360-569-4733